

indoor

# Loop

## Upholstered dining chair / silla tapizada

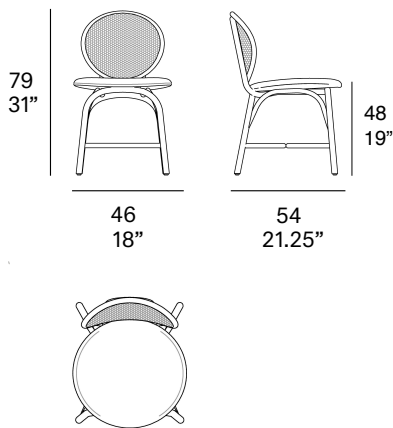
Norm Architects, 2023

T001 U



Dining chair with structure made of peeled and tinted natural rattan of 28 mm/1.1" diameter. Backrest manufactured in tinted natural wicker ("octagonal wicker"). Finished with a three step water-based coating (dye, base coat and top coat) highly resistant to solar radiation thanks to UV filters. Upholstered seat. Possibility of customization through a wide variety of high performance technical fabrics. Protective caps.

Silla con estructura en rattan natural pelado y tintado de 28 mm de calibre. Respaldo fabricado en rejilla natural tintada ("octagonal wicker"). Acabado con recubrimiento en tres fases (tinte, fondo y acabado) con filtros UV que lo hacen altamente resistente a la radiación solar. Los acabados utilizados son en base al agua. Asiento tapizado. Posibilidad de personalización mediante una amplia variedad de tejidos técnicos de altas prestaciones de uso. Tacos protectores.



### Shipment details

Qty	1 dining chair (1 box)
Volume	0,26 m <sup>3</sup> / 9.18 ft <sup>3</sup>
Gross weight	8 kg / 17.6 lb
Net weight	4 kg / 8.8 lb
Box dimensions (approx.)	51 x 59 x 84 cm 20" x 24.5" x 35.5"
Item dimensions (width x depth x height)	46 x 54 x 79 cm 18" x 21.25" x 31"
COM (1, 40 - 1,50 m / 54"-59")	0,70 m / 0.66 yd

expormim

Expormim S.A.  
Pol. Ind. Jaime I  
46640 Moixent (Valencia) Spain  
+34 962 295 144/5  
export@expormim.com  
www.expormim.com

Expormim USA LLC  
(212) 204-8572  
usa@expormim.com  
www.expormim.com

1/5

**Rattan**

**Tinted**



R10 natural



R23 french grey



R06 verde oliva



R03 noce



R07 mogano



R24 cinder purple



R05 grigio

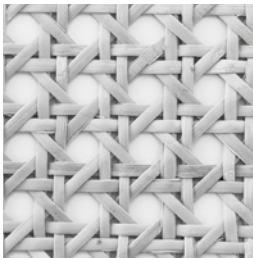


R08 azzurro



R09 nero

**Wicker / rejilla**



octagonal wicker



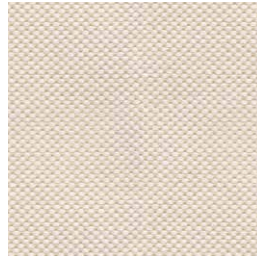
indoor

Cushions / confección

group 1 - natté Sunbrella®



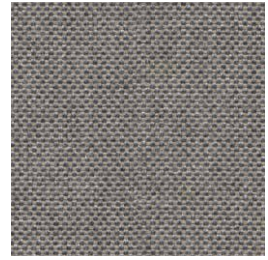
natté white



natté canvas



natté taupe chalk



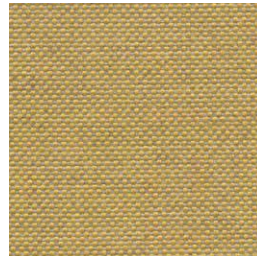
natté carbon beige



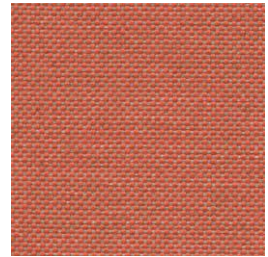
natté dark taupe



natté carbon sky



natté amber



natté flamingo

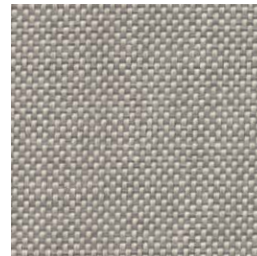
group 1 - dolce Crevin®



dolce 07



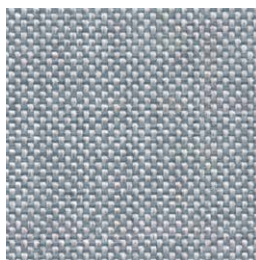
dolce 16



dolce 75



dolce 53



dolce 43



dolce 24



dolce 30



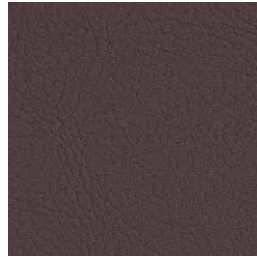
indoor

Cushions / confección

group 1 - valencia™ faux leather



valencia 1049



valencia 0020

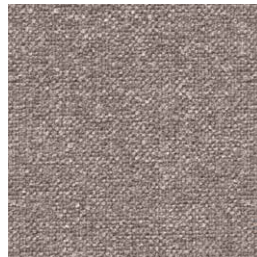


valencia 9035

group 2 - ito Crevin®



ito 05



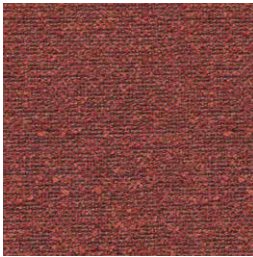
ito 18



ito 12



ito 71



ito 21



ito 20



ito 38



ito 45

group 2 - sacco Crevin®



sacco 02



sacco 05



sacco 11

**expormim**

Expormim S.A.  
Pol. Ind. Jaime I  
46640 Moixent (Valencia) Spain  
+34 962 295 144/5  
export@expormim.com  
www.expormim.com

Expormim USA LLC  
(212) 204-8572  
usa@expormim.com  
www.expormim.com

4/5

indoor

Cushions / confección

group 3 - ascendent Carlucci®



ascendent 090



ascendent 070



ascendent 071



ascendent 030



ascendent 093



ascendent 022



ascendent 040

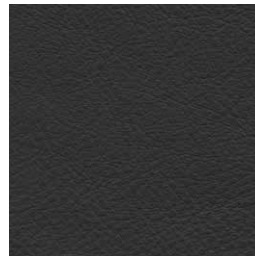
group 3 - elmosoft Elmo® leather



elmosoft 22024



elmosoft 93129



elmosoft 99999