

indoor

Frames

Upholstered dining chair / silla tapizada

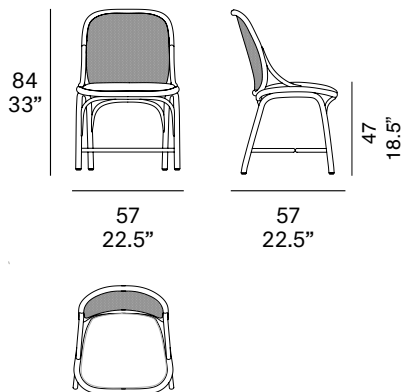
Jaime Hayon, 2014/2021

T040 U



Dining chair with structure made of peeled and tinted natural rattan of 28 mm/1.1" diameter. Backrest manufactured in tinted natural wicker ("octagonal wicker"). Finished with a three step water-based coating (dye, base coat and top coat) highly resistant to solar radiation thanks to UV filters. Upholstered seat. Possibility of customization through a wide variety of high performance technical fabrics. Protective caps with removable plastic-felt inserts.

Silla con estructura en rattan natural pelado y tintado de 28 mm de calibre. Respaldo fabricado en rejilla natural tintada ("octagonal wicker"). Acabado con recubrimiento en tres fases (tinte, fondo y acabado) con filtros UV que lo hacen altamente resistente a la radiación solar. Los acabados utilizados son en base al agua. Asiento tapizado. Posibilidad de personalización mediante una amplia variedad de tejidos técnicos de altas prestaciones de uso. Tacos protectores reversibles de plástico-fieltro.



Shipment details

Qty	1 dining chair (1 box)
Volume	0,32 m ³ / 11.3 ft ³
Gross weight	8 kg / 17.6 lb
Net weight	4,5 kg / 9.9 lb
Box dimensions (approx.)	62 x 62 x 90 cm 24.5" x 24.5" x 35.5"
Item dimensions (width x depth x height)	57 x 57 x 84 cm 22.5" x 22.5" x 33"
COM (1, 40 - 1,50 m / 54"-59")	0,70 m / 0.66 yd

Certifications

EN 16139:2013

expormim

Expormim S.A.
Pol. Ind. Jaime I
46640 Moixent (Valencia) Spain
+34 962 295 144/5
export@expormim.com
www.expormim.com

Expormim USA LLC
(212) 204-8572
usa@expormim.com
www.expormim.com

1/5

Rattan

Tinted



R10 natural



R23 french grey



R06 verde oliva



R03 noce



R07 mogano



R24 cinder purple



R05 grigio

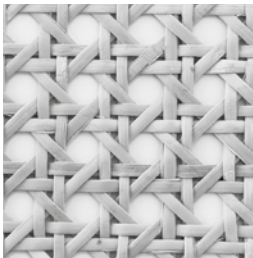


R08 azzurro



R09 nero

Wicker / rejilla



octagonal wicker



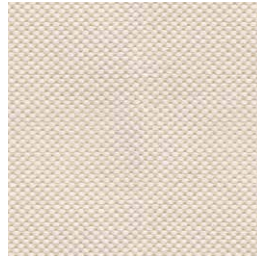
indoor

Cushions / confección

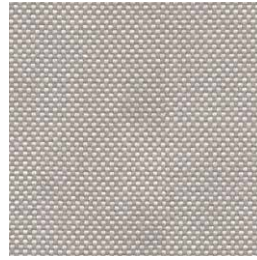
group 1 - natté Sunbrella®



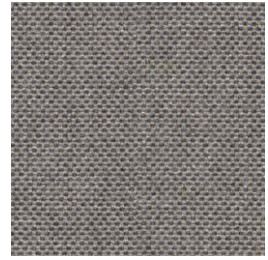
natté white



natté canvas



natté taupe chalk



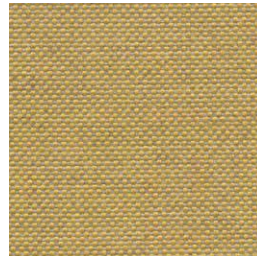
natté carbon beige



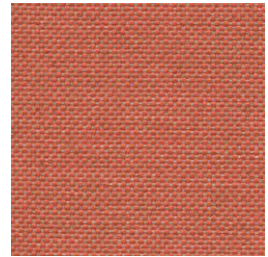
natté dark taupe



natté carbon sky



natté amber



natté flamingo

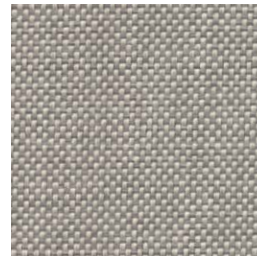
group 1 - dolce Crevin®



dolce 07



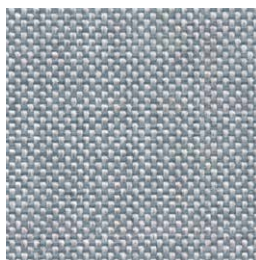
dolce 16



dolce 75



dolce 53



dolce 43



dolce 24



dolce 30

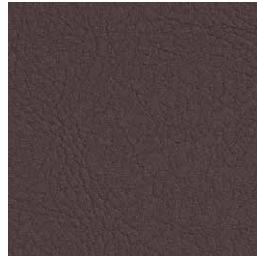
indoor

Cushions / confección

group 1 - valencia™ faux leather



valencia 1049



valencia 0020

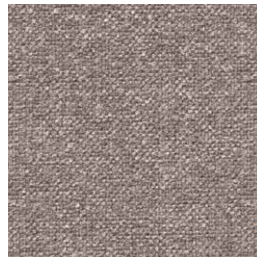


valencia 9035

group 2 - ito Crevin®



ito 05



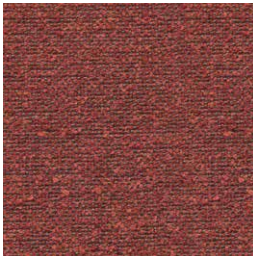
ito 18



ito 12



ito 71



ito 21



ito 20



ito 38



ito 45

group 2 - sacco Crevin®



sacco 02



sacco 05



sacco 11

expormim

Expormim S.A.
Pol. Ind. Jaime I
46640 Moixent (Valencia) Spain
+34 962 295 144/5
export@expormim.com
www.expormim.com

Expormim USA LLC
(212) 204-8572
usa@expormim.com
www.expormim.com

4/5

indoor

Cushions / confección

group 3 - ascendent Carlucci®



ascendent 090



ascendent 070



ascendent 071



ascendent 030



ascendent 093



ascendent 022



ascendent 040

group 3 - elmosoft Elmo® leather



elmosoft 22024



elmosoft 93129



elmosoft 99999

indoor

Frames

Upholstered dining armchair / sillón comedor tapizado

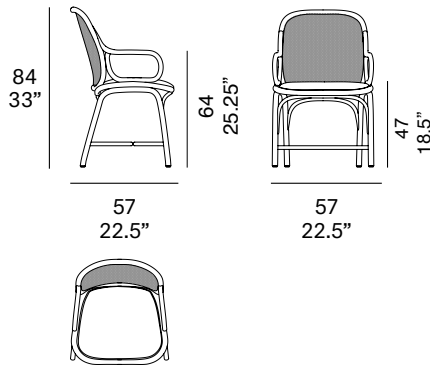
Jaime Hayon, 2014/2021

T041 U



Dining armchair with structure made of peeled and tinted natural rattan of 28 mm/1.1" diameter. Backrest manufactured in tinted natural wicker ("octagonal wicker"). Finished with a three step water-based coating (dye, base coat and top coat) highly resistant to solar radiation thanks to UV filters. Upholstered seat. Possibility of customization through a wide variety of high performance technical fabrics. Protective caps with removable plastic-felt inserts.

Sillón de comedor con estructura en rattan natural pelado y tintado de 28 mm de calibre. Respaldo fabricado en rejilla natural tintada ("octagonal wicker"). Acabado con recubrimiento en tres fases (tinte, fondo y acabado) con filtros UV que lo hacen altamente resistente a la radiación solar. Los acabados utilizados son en base al agua. Asiento tapizado. Posibilidad de personalización mediante una amplia variedad de tejidos técnicos de altas prestaciones de uso. Tacos protectores reversibles de plástico-fieltro.



Shipment details

Qty	1 dining armchair (1 box)
Volume	0,32 m ³ / 11.3 ft ³
Gross weight	8,25 kg / 18.2 lb
Net weight	5 kg / 11 lb
Box dimensions (approx.)	62 x 62 x 90 cm 24.5" x 24.5" x 35.5"
Item dimensions (width x depth x height)	57 x 57 x 84 cm 22.5" x 22.5" x 33"
COM (1, 40 - 1,50 m / 54"-59")	0,70 m / 0.66 yd

Certifications

EN 16139:2013

Rattan

Tinted



R10 natural



R23 french grey



R06 verde oliva



R03 noce



R07 mogano



R24 cinder purple



R05 grigio

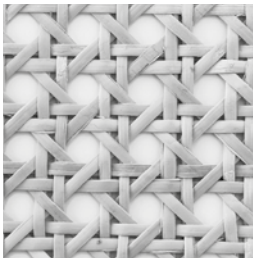


R08 azzurro



R09 nero

Wicker / rejilla



octagonal wicker



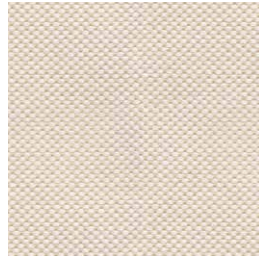
indoor

Cushions / confección

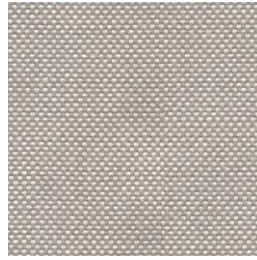
group 1 - natté Sunbrella®



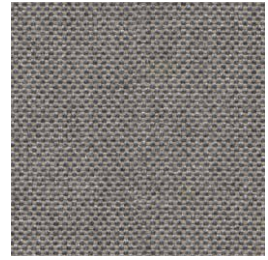
natté white



natté canvas



natté taupe chalk



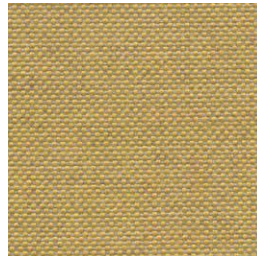
natté carbon beige



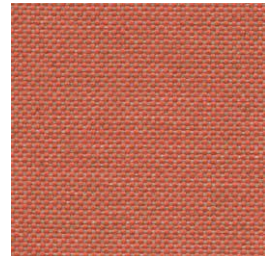
natté dark taupe



natté carbon sky



natté amber



natté flamingo

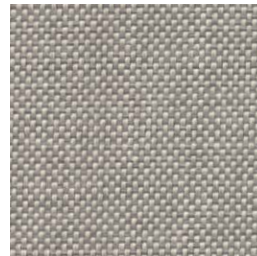
group 1 - dolce Crevin®



dolce 07



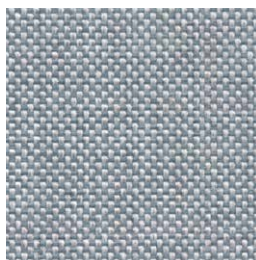
dolce 16



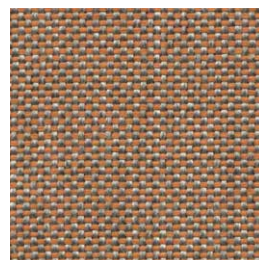
dolce 75



dolce 53



dolce 43



dolce 24



dolce 30

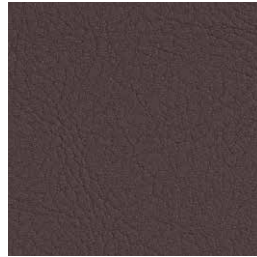
indoor

Cushions / confección

group 1 - valencia™ faux leather



valencia 1049



valencia 0020

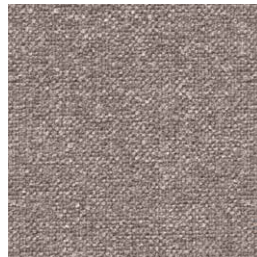


valencia 9035

group 2 - ito Crevin®



ito 05



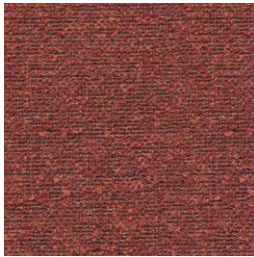
ito 18



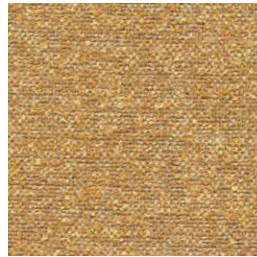
ito 12



ito 71



ito 21



ito 20



ito 38



ito 45

group 2 - sacco Crevin®



sacco 02



sacco 05



sacco 11

expormim

Expormim S.A.
Pol. Ind. Jaime I
46640 Moixent (Valencia) Spain
+34 962 295 144/5
export@expormim.com
www.expormim.com

Expormim USA LLC
(212) 204-8572
usa@expormim.com
www.expormim.com

indoor

Cushions / confección

group 3 - ascendent Carlucci®



ascendent 090



ascendent 070



ascendent 071



ascendent 030



ascendent 093



ascendent 022



ascendent 040

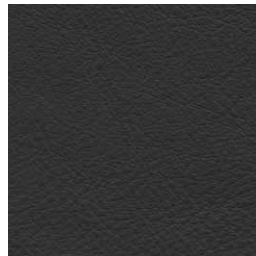
group 3 - elmosoft Elmo® leather



elmosoft 22024



elmosoft 93129



elmosoft 99999